



“...We don’t need to research  
women...”

Surgeon Captain Kate King  
Head, Academic Department of Military General Practice & Visiting Professor, ARU



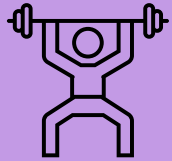
# Scoping Review: Inclusion and Exclusion Criteria

	Include	Exclude
<b>Source</b>	Studies from bibliographic databases Grey literature sources	
<b>Type of study</b>	Primary research studies – quantitative or qualitative Systematic reviews – qualitative and quantitative Service evaluations Reports, theses	Secondary research sources (e.g. editorials, commentaries, letters) Conference abstracts
<b>Population</b>	Service women – Royal Navy, Army, RAF, Marines Regular and Reserve forces  Notes: <ul style="list-style-type: none"> <li>Where civilian spouse, civilians, reservists and ADSW are included the results must be disaggregated to isolate results just for ADSW</li> <li>Where a mixed male/female sample – results must be disaggregated by sex.</li> </ul>	Military veteran populations Service men only samples Mixed male-female samples where results are not disaggregated by sex
<b>Setting / Context / Time</b>	UK Armed Forces only Any branch of military Studies from between 1990 - 2024 Operational or non-operational settings	Military forces of a nation outside the UK Military veterans (even if the study is done with military veterans and is about their time in service)
<b>Outcome/ exposure</b>	Health- related research – a broad definition to include research relating to treatments, interventions, programmes, education/ counselling, pre-clinical trials, epidemiology studies, performance etc.  Does the study address an aspect of physical or mental health or is related to operational readiness? If yes, include.	

# Defence Medical Research Themes



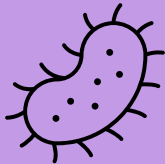
**Ready & Able - 87**



**Musculoskeletal - 56**



**Mental Health - 34**



**Endemic, Epidemic & Environmental - 17**



**Combat Casualty Care - 3**



**Closing the Sophistication  
Gap - 1**

# Women's Health Strategy for England

Area	N
Menstrual health	9
Cervical screening	2
Pregnancy	9
Abortion care	1
Menopause	1
Gynae conditions	0
Urogynae	0
Gynae cancers	0
Fertility	2
Post-natal support	4
Breast cancer screening	0
Contraception	8
Sexual health and wellbeing	3

Area	N
Pregnancy loss	1
Pelvic floor health	3
Preconception	0
Healthy behaviours	12
Violence against women	5
Mental health	18
Bone health	18
Long term conditions	13
Other*	86

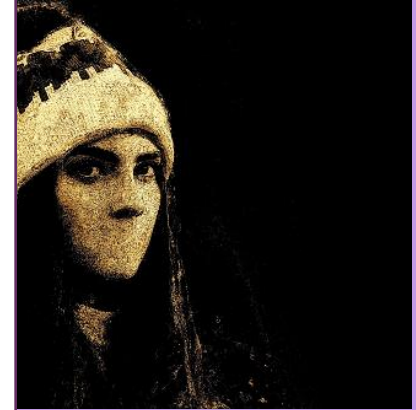
\*other includes predominantly performance related outcomes, MSK, oral health

# Credibility Excess



A speaker is given more credibility than they deserve based on their social identity

# Testimonial Injustice



A speaker's voice or knowledge is unfairly dismissed due to their social identity

seeing the follow-up studies that include women. Furthermore, in a wide range of physiological research (thermal burden, protective equipment, musculoskeletal injury, decompression sickness, heat acclimation, etc.), where there may be differences between women and men, women are being excluded for reasons relating to practicality and resourcing. MODREC considers there to be a clear ethical imperative to include women in such studies wherever possible. This is a matter of equality and duty of care, especially given the decision to include women in almost all military roles.

“...We *do* need to research women”



**Thank you to Kirsten, Ruth,  
Lauren, Claire, Maddy, Beck  
& VK**

[kate.king415@mod.gov.uk](mailto:kate.king415@mod.gov.uk)  
[@drkateking.bsky.social](https://bsky.app/profile/drkateking.bsky.social)